

West Eugene EmX Extension Project Scoping

1. PURPOSE AND NEED STATEMENT

a. Purpose

As proposed by LTD, the **Purpose** of the project is to:

1. Improve transit travel time, reliability, ridership, efficiency, and effectiveness in the West 11th Corridor (east/west);
2. Support local and regional plans and goals for land use and transportation; and
3. Support economic development opportunities in the corridor;

while:

4. Being sensitive to and protecting environmental resources; and
5. Obtaining local public support.

b. Need

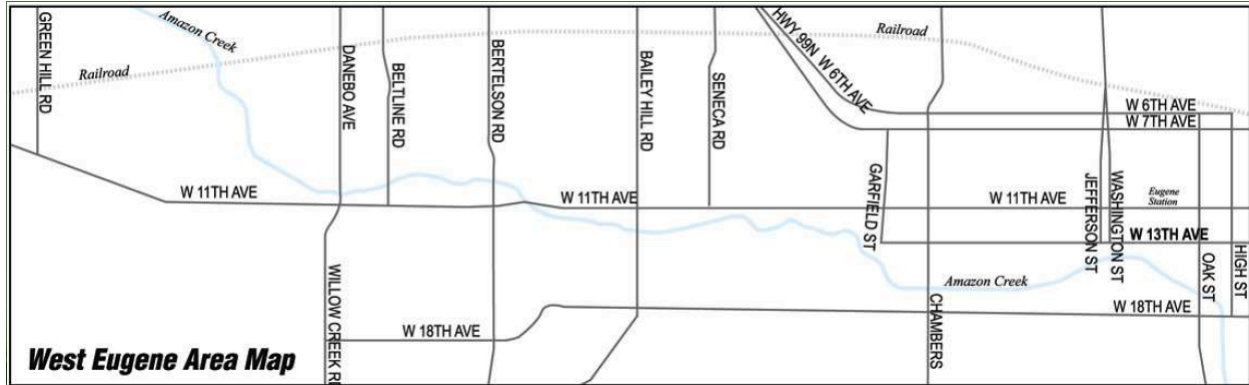
As proposed by LTD, the **Need** for the project results from:

1. Historic and projected increases in traffic congestion in the West 11th Corridor due to increases in regional and corridor population and employment;
2. Lengthy transit travel times and deteriorating transit reliability in the West 11th Corridor due to growing traffic congestion;
3. Increasingly scarce transit operating revenues;
4. Adoption and amendment of the Regional Transportation Plan that reflect bus rapid transit (BRT) as the region's preferred high capacity transit mode;
5. Recent removal of the West Eugene Parkway as a regional transportation system improvement;
6. Growing reliance on transit by the region to meet mobility needs in the West 11th Corridor;
7. Prioritization of the West 11th travel shed by the City of Eugene and LTD as the region's third BRT corridor;
8. Local and regional land use and development goals and objectives that target the West 11th Corridor for residential, commercial, retail, and industrial development to help accommodate forecasted regional population and employment growth; and
9. Identification and protection of important resources in the natural and built environment in the West 11th Corridor, including but not limited to wetlands, and rare plants and animals and their habitat that could limit options for improvements to the transportation system.

2. STUDY AREA AND RANGE OF ALTERNATIVES

a. Study Area

As proposed by LTD, the **Study Area** of the project is the West 11th Corridor, which encompasses a general corridor (travel shed) focused on east/west transit travel demand, generally between downtown Eugene and Greed Hill Road:

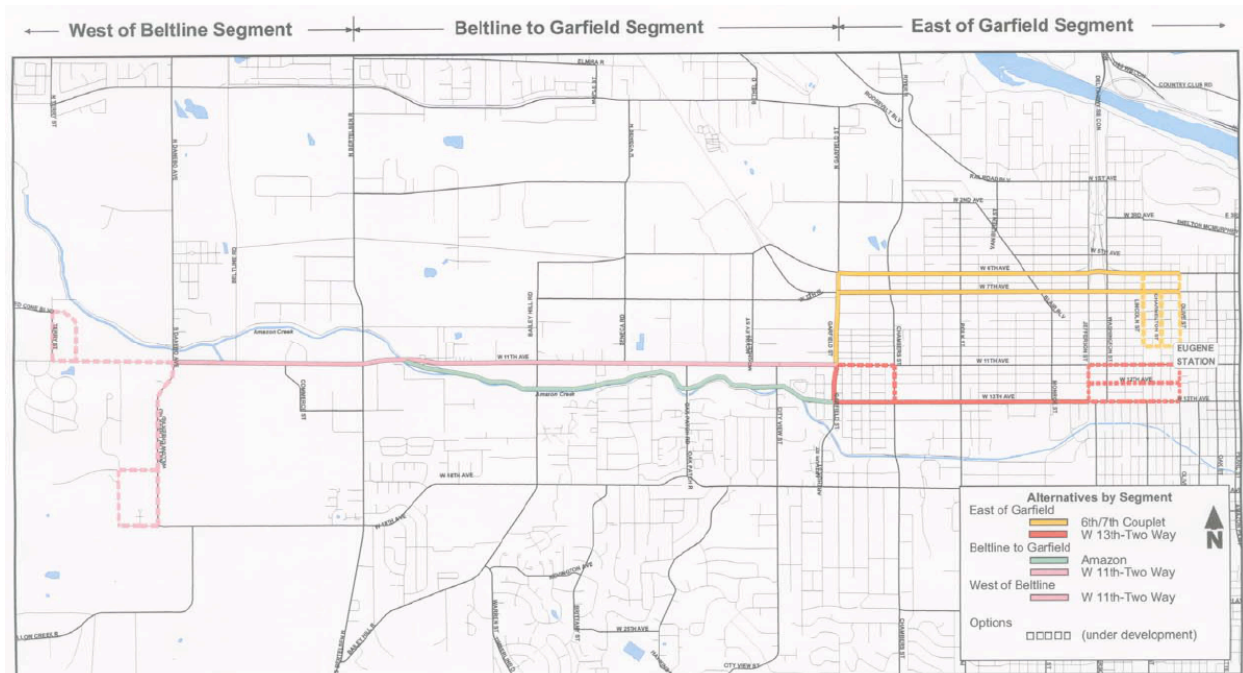


b. Range of Alternatives

At this point in time, LTD expects to work with the following three segments of the Study Area, but this approach may change as we develop the long-term work plan:

1. Downtown to Garfield Street
2. Garfield Street to Bertelsen Road
3. Bertelsen Road to Green Hill Road

As proposed by LTD, the **Range of Alternatives** to be considered include:



3. GOAL, OBJECTIVES, ISSUES, AND POTENTIAL IMPACTS

a. Goal

As proposed by LTD, the **Goal** of the project is the same as the **Purpose**.

b. Objectives

As proposed by LTD, the **Objectives** of the project are to:

1. Provide convenient, fast, and reliable transit service in the Corridor;
2. Improve the efficiency and effectiveness of transit service in the Corridor;
3. Support the desired land use patterns and development in the Corridor;
4. Help accommodate future growth in travel demand in the Corridor;
5. Seek opportunities to enhance the safety and operations for pedestrians, bicyclists, and motorists traveling in the Corridor;
6. Provide for a fiscally stable and efficient transit system; and
7. Provide an environmentally sensitive design for the project.

c. Issues

What issues should be evaluated in assessing each of the alternatives?:

d. Potential Impacts

As proposed by LTD, the **Potential Impacts** related to the project could include:

1. Air Quality;
2. Transportation and Traffic;
3. Bicycles and Pedestrians;
4. Water Quality and Flooding;
5. Neighborhoods and Houses;
6. Noise;
7. Parks and Open Space;
8. Businesses and Employment;
9. Public Services and Utilities;
10. Natural Resources;
11. Cultural or Historic resources;
12. Land Uses;
13. Any Other Area of Potential Impact; and
14. Hazardous Materials.